

Biddenham International School: H&SC Curriculum

YEAR 13



Unit 24

LO2 - Public health strategies

LO1 - The systems for protecting & promoting public health

LO4- Psychological impacts of requiring care

LO1- Psychological theories and approaches

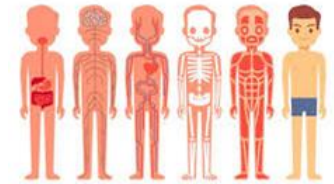
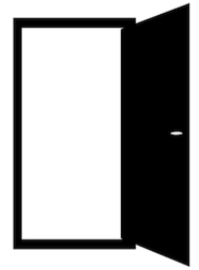
LO6- The sensory systems

LO4- The musculoskeletal system

LO3- The digestive system



Success



LO3- chronic illness and long-term health conditions

LO2- Health Psychology

LO5- The control & regulatory systems

LO1 - The cardiovascular system

LO2- The respiratory system

Unit 22

LO3- Anti-discriminatory legislation and national initiatives



Unit 3

LO2- Legislation, policies & procedures for health, safety & security

Unit 4

LO4 - Responding to incidents and emergencies

LO4 - Promoting equality, diversity and rights in H&SC

LO1- Potential hazards in H&SC

LO3- Roles & responsibilities involved in health, safety & security

LO2 - Discriminatory practices

LO3 - Person-centred approach

LO1 - Relationships in H&SC

Unit 2

LO1- Equality, diversity and rights

LO4 - effective use of communication

LO2 - Factors that influence the building of relationships in H&SC

Unit 1



YEAR 12

Biddenham International School: H&SC Curriculum



Year 11

Year 10

Year 9

LO1
Be able to assess scenes of accidents to identify risks and continuing dangers

LO2
Understand the first aid procedures for a range of injuries

R031
Using basic first aid procedures

LO3
Be able to apply basic first aid procedures

LO2
Understand the benefits participating in creative activities



Start R027
Creative activities to support individuals in health, social care and early years settings

LO3
Understand how legislation impacts on care settings



LO1
Understand how to support individuals to maintain their rights

R021 Exam

LO3
Be able to carry out creative activities in a health, social care or early years settings

LO1
Understand the different types of creative activities available in health, social care and early years settings

LO4
Understand how personal hygiene, safety and security measures protect individuals



LO2
Understand the importance of values of care and how they are applied

Start R021
Essential values of care for use with individuals in care settings

LO3
Be able to communicate effectively within a health, social care and early years setting.

LO2
Qualities of effective care

LO3.1
Plan for a one-to-one and group health, social care or early years interaction



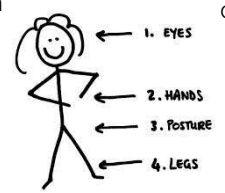
LO3.2
How to communicate effectively in a one-to-one and group situation

LO2
Understand the personal qualities that contribute to effective care

LO1.1
Different types of communication



LO1.2
Barriers to communication



LO1
Understand how to communicate effectively

Start R022:
Communicating and working with individuals in health, social care and early years settings